

Pressroom Electronics, Inc.

Presscommander Touch Panel PC Remote Display

Configuration and Operations



PN# 28-163R2

Access Our Product Mix from your Smart Phone

PressCommander 		SSM-10 	
PCS-05 		SSM-20 	
PCS-08 		1500SS 	
PCS-10 		The Ultimate 	
PCS-20 		BM-1600 	
PCS-4000 		PressCam 8 	
Model 3200SS 		PressCam 8 Junior 	
SSM-05 		Remote Die Box 	
SSM-08 		Pressroom Website 	

**Presscommander Remote Touch Screen Setup and Operation
And
Production Monitoring (or Down-Time Monitoring)
Setup and Operation**

Pressroom Electronics, Inc.

Presscommander Ethernet/WI-FI Remote operator station and Down-Time Monitor

- The Touch Panel PC is 10.1" fully functional Windows 7 computer that is powered by 12vdc (3A) to 24vdc (1.5A).
- Not necessary, but you can add a mouse or keyboard via the 2 USB ports.
- You can use the Presscommander Offline Job programmer (goto <http://pressroomelectronicsupdates.com> user:level2 pass: 9742tri for videos) via either the USB or Serial port on the Touch Panel PC and the software already installed.
- Connection to the Presscommander and/or your network is via the Ethernet port, or wi-fi USB option
- When connected to your network, you can view other computers on your network and they can view you as "HMI000x-PC" on the network. Only the folder c:\pcslogs\ is available to anyone on the network using User Name: hmi719 and Password: hmi719
- Every time you open up Internet Explorer to connect to the Presscommander a new LOG file is created (in a spreadsheet format) and accumulates dates/times of press operations.
- Right Mouse Click: Touch and HOLD until a full circle appears around your finger, then release.

-
- To use the Touch Panel PC as a Remote Display for the Presscommander, the Presscommander must have the Ethernet option installed.
 - The Presscommander Ethernet option must be enabled via the Display Unit menu. Use the Key to put the Display unit in PROG mode. Push the "OPTIONS" button 5 times. Cursor over to the right side of the word "TCP" and press "ENTER"
 - You must find the Internet address of the Ethernet in your Presscommander. You can make this address permanent (recommended) or allow your network to control the address. Use the PCS_FINDER app on your Touch Panel PC Desktop to find this address.
 - Once you have the address, open up Internet Explorer and type in the address and TOUCH ENTER. NOTE: Drag the icon in the address box onto the Desktop (for a future shortcut).
 - The Presscommander Ethernet Remote Display is based on JAVA language. Internet Explorer will warn you when you try to connect to the Presscommander. Touch the CHECK BOX and Touch OK.
 - The following pages will explain the operate of the Remote Display (see also YouTube video. Search Presscommander)
 - **Your Presscommander Ethernet is preprogrammed with a fixed IP address of 169.254.2.x (where x is a value from 1 to 254). A Stand-Alone Java based Remote Display Program has been loaded on your Touch Panel PC. A shortcut for this Program is on the Desktop and will automatically link to the Presscommander it came with. But, you can still use a Browser to Remote to the Presscommander using its IP address**

Pressroom Electronics, Inc.

Presscommander Ethernet/WI-FI Remote operator station and Down-Time Monitor

Fully functioning Windows 7 Industrial fanless multi-touch panel PC with 32GB Solid-State memory, USB, Ethernet, Optional Wi-Fi, Optional Wi-Fi bridge, Internet Explorer 10, Java, Open Office, Adobe Flash, and Adobe reader

You can connect to your company network, just like any other PC. You can see and be seen, just like any other PC (with proper setup)

Free OpenOffice version of Excel, called "Calc"

Link to your Presscommander Remote Desktop. (see Pages 5-8)

The Presscommander Offline Job Programmer (see Page 9)

Program to find the Internet Address of your Presscommander (see Pages 10 & 14)



Terminal program if a Firmware update is ever needed

Folder that contains the LOG files. (The .CSV files will open in Excel) (see Page 6)

Tap 1 time to bring up a full keyboard (if it doesn't automatically pop up)

Pressroom Electronics, Inc.

Presscommander Ethernet/WI-FI Remote operator station and Down-Time Monitor

Note: Key on Presscommander must be in RUN position while at this Panel

Note: The LOCK ring and Fault Reset ring must be GREEN before changing most values

LOCK: Enter in 5 digit code to unlock. First 3 digits are the password you assigned at the PCS Display Unit, followed by a special 2 digit code. Example: if your password is 435, you would enter 43512 on the Remote Display for limited access, or enter 43563 for full access. If don't assign a password then enter 00012 or 00063

The screenshot shows the 'PCS Remote Display' interface for Pressroom Electronics. It includes fields for Operator #, Job #, Job Name, Strokes, Parts, Batches, Batch Size, Quality, and Quantity Left. It also displays Press Status, Brake Monitor settings, and various performance metrics like Run Time, Down Time, Standby Time, Good PR, PPL, MPR, Avail, Perf, and OEE. At the bottom, there are fields for ANGLE, SPM, and Shut-Height, along with a POS. indicator and logging information.

Annotations:

- Touch a White Field & ENTER to change value**: Points to the Operator # field.
- Touch a White Field & ENTER to Reset value**: Points to the Job # field.
- Red: Locked password protected. Touch Lock and enter 5 digit password**: Points to the Lock button.
- Green: Unlocked. Touch Lock & ENTER to relock**: Points to the Lock button.
- Black: Waiting for 5 digit code**: Points to the Lock button.
- Red: Fault. Touch button & ENTER to Reset (must be unlocked first)**: Points to the Fault Reset button.
- Grn: No Fault**: Points to the Fault Reset button.
- Touch this button 2 times to see the active FAULT screen**: Points to the Fault Reset button.
- Touch to Navigate to other screens (note: the button descriptions change depending on the page you are on)**: Points to the PLS/DIE, Tonn/Servo, and Other buttons.

Pressroom Electronics, Inc.
Presscommander Ethernet/WI-FI Remote operator station and Down-Time Monitor

Production & Downtime Monitor with Overall Equipment Effectiveness.

The User must calculate the PPT (Planned Production Time) for either the Shift, the Job, or the Operator (in Minutes). PPT is the best case scenario production time in MINUTES.

Example: PPT = Shift 480min – normal breaks 30min – normal lunch 60min – maintenance 40min = 350min

The User must calculate the MPR (Maximum Production Rate) for the current Job. This is based on SPM of the Job, wear of the die, material quality. MPR is best case scenario for PARTS / MINUTE

Example: MPR = 100 parts/minute (when press is running)

Run Time: Increments when the Press is cycling in SINGLE or CONT modes (in Hours:Min:Seconds)

Down Time: Increments when either a Down Time Reason Code is active or a Fault has occurred.

Standby Time: Increments when the Press is simply idle.

Touching any timer will allow you to RESET them back to 0:0:0

Good PR: is the Production Rate of parts, based on values found in the Parts, Run, Down, and Standby timers.

Avail: Availability% is based on the Run, Down, and Standby timers vs PPT.

Perf: Performance% is based on the Good PR vs MPR

OEE: Overall Equipment Effectiveness is based on Avail and Perf together.

Operator Downtime Reason Code: Touch to Enter Downtime Reason for a list of Codes. Codes can be customized.

The screenshot displays the 'PressCommander RSD' interface. At the top, it shows 'PCS Remote Display' and 'Pressroom Electronics'. The main area is divided into several sections:

- Operator Information:** Operator #: 0, Job #: 1, Job Name: ----, Strokes: 50, Parts: 50 /1, Batches: 0, Batch Size: 1000, Quality: 50000, Quantity Left: 49950, Press Status: SINGLE.
- Brake Monitor (mSec):** Last Stop: 221, Warn Set: 270, Fail Set: 350.
- Timers and Performance:** Run Time: 0000:00:28, Down Time: 0000:00:00, Standby Time: 0000:00:21, Good PR: 06409 /hr, PPT: 0420, MPR: 060, Avail: 99%, Perf: 176%, OEE: 174%.
- Position and Height:** POS. (with a circular indicator), ANGLE: 001°, SPM: 000, Shut-Height: +01.145.
- Operator Downtime Reason Code:** A red button labeled 'Operator Downtime Reason Code'.
- Navigation and Status:** A numeric keypad (1-9, 0, Lock, Reset Fault), an 'ENTER' button, and buttons for 'PLS/ DIE', 'Tonn/ Servo', and 'Other'.

At the bottom, it shows 'Logging started: 12/11/15 9:20:59 AM', 'Log Entry # 1', and 'IP address connected to: 192.168.0.141'.

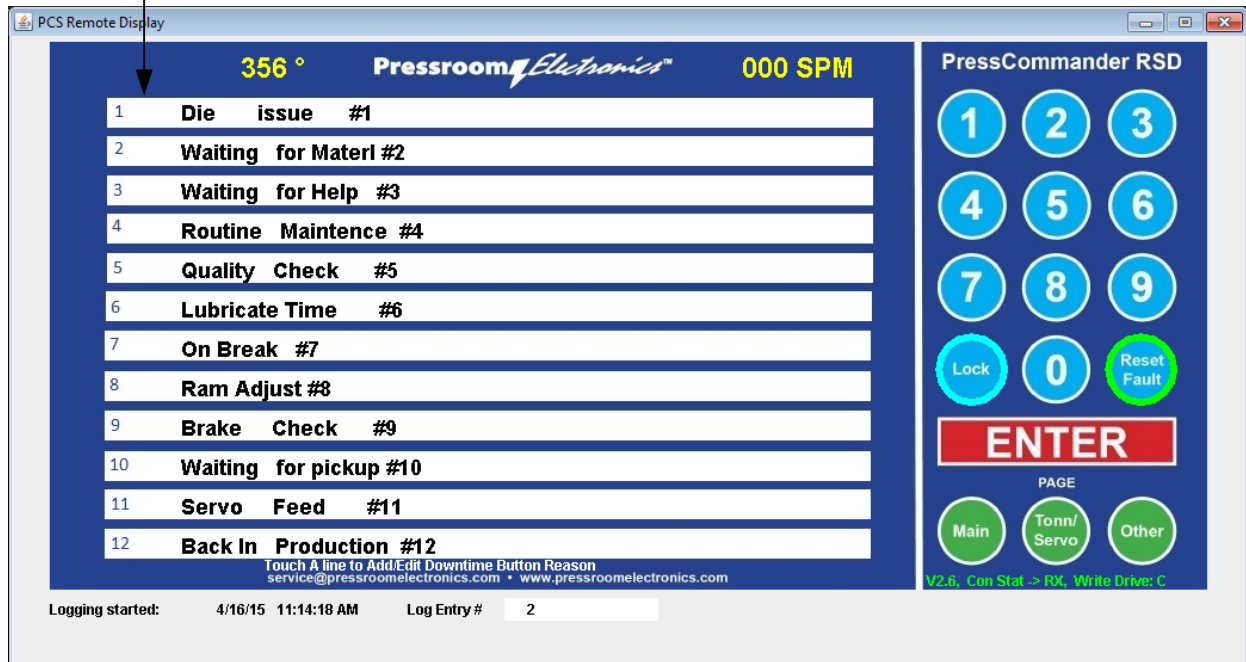
Pressroom Electronics, Inc.
Presscommander Ethernet/WI-FI Remote operator station and Down-Time Monitor

Production & Downtime Monitor with Overall Equipment Effectiveness.

The Operator can Touch any Red Button to select the current Down Time Reason.
Once a Reason Code is touched, you will go back to the MAIN screen and the STATUS line will reflect the Code.
The Last Red Button will release the Press back into Production, or Cycling the Press with the KEY in RUN mode.
Cycling the Press with the KEY in PROG mode will not remove the Reason Code.



This list can be customized by Touching the Square Green button, while the Remote is UNLOCKED.
A virtual keyboard will appear and you can alter 1 – 11 (12 cannot be altered)



Pressroom Electronics, Inc.

Presscommander Ethernet/WI-FI Remote operator station and Down-Time Monitor

Double Tapping the pcslogs folder icon on the desktop brings you here.

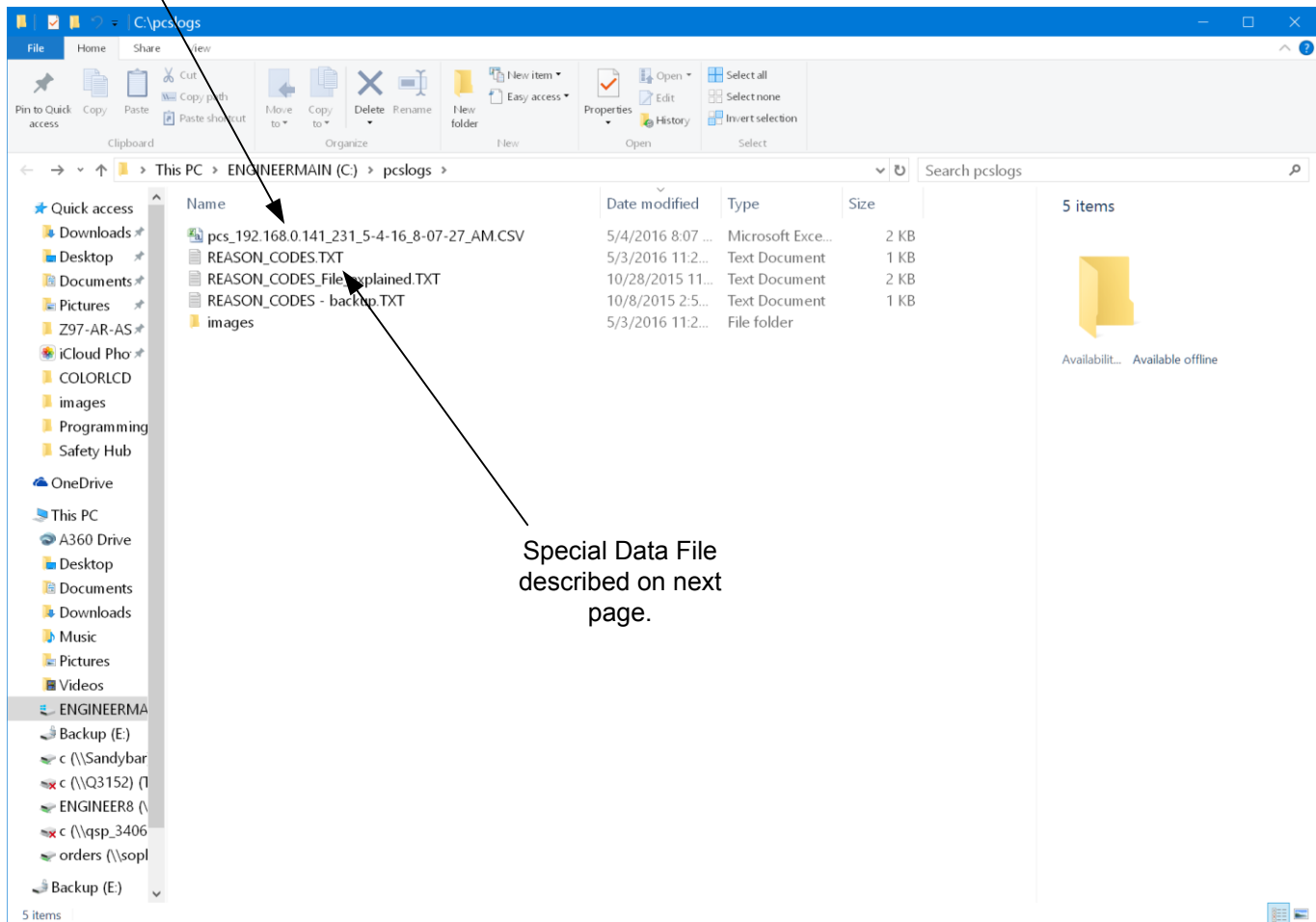
Do not attempt to open any of these files while the Internet Connection to the Presscommander is open and running.

The best way to view the file with an OPEN connection, is to make a copy of the file

COPY/PASTE on a Touch Screen:

Double Tap the .CSV file to open the file in OpenOffice Calc or Excel

HOLD your finger on the File (until a full circle appears around your finger) and the pop up menu appears. Select either COPY or PASTE



Like any Windows PC, you can setup Windows to allow Outside access to this folder. See your IT person to help set this up for you.

OR

You can Map a Network Hard Drive (NAS) and have the Logs directly written to your Mapped Drive instead of locally on the Touch Screen Drive. The next page describes this.

Pressroom Electronics, Inc.

Presscommander Ethernet/WI-FI Remote operator station and Down-Time Monitor

“REASON_CODES.TXT” file contains all your downtime reason codes and various other information described below:

Line 1: Downtime reason code #1

.
.

Line 24: Last reason Code #24

Line 25: The Drive Letter to locate the LOG files:

C indicates the files will be written to C:\pcslogs

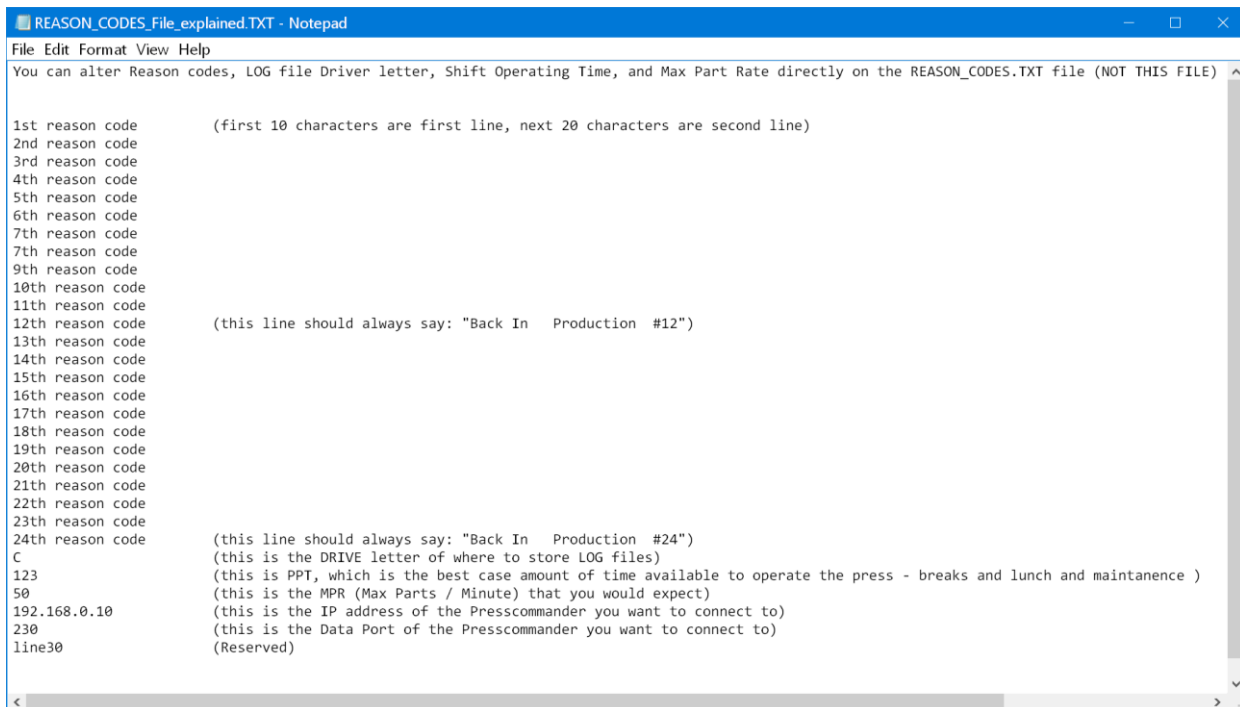
Z indicates the log files will be written to Z:\pcslogs

Line 26: PPT value for production monitoring

Line 27: MPR value for production monitoring

Line 28: IP address of your PressCommander

Line 29: IP Data Port# of your PressCommander



```
REASON_CODES_File_explained.TXT - Notepad
File Edit Format View Help
You can alter Reason codes, LOG file Driver letter, Shift Operating Time, and Max Part Rate directly on the REASON_CODES.TXT file (NOT THIS FILE)

1st reason code      (first 10 characters are first line, next 20 characters are second line)
2nd reason code
3rd reason code
4th reason code
5th reason code
6th reason code
7th reason code
8th reason code
9th reason code
10th reason code
11th reason code
12th reason code     (this line should always say: "Back In  Production  #12")
13th reason code
14th reason code
15th reason code
16th reason code
17th reason code
18th reason code
19th reason code
20th reason code
21th reason code
22th reason code
23th reason code
24th reason code     (this line should always say: "Back In  Production  #24")
C                    (this is the DRIVE letter of where to store LOG files)
123                  (this is PPT, which is the best case amount of time available to operate the press - breaks and lunch and maintenance )
50                   (this is the MPR (Max Parts / Minute) that you would expect)
192.168.0.10         (this is the IP address of the Presscommander you want to connect to)
230                  (this is the Data Port of the Presscommander you want to connect to)
line30              (Reserved)
```

Only Lines 25, 28,29 need to be directly modified by text editor. The other lines are modified from within the Remote Touch Screen program

Pressroom Electronics, Inc.

Presscommander Ethernet/WI-FI Remote operator station and Down-Time Monitor

After making a copy of the .CSV file and then Double Tapping on the file copy, you will open up “Calc” automatically and this is something like what you will see

The size of the spreadsheet depends on how many Operator#/Job# changes are made and how many faults are recorded

pcs_192.168.0.132_230_4-25-14_2-38-38_PM - Copy.CSV - Microsoft Excel

Home Insert Page Layout Formulas Data Review View Add-Ins QuickBooks

Themes Colors Fonts Effects Margins Orientation Size Print Area Page Setup Width: Automatic Height: Automatic Scale: 100% Gridlines View Print Sheet Options Bring to Front Send to Back Selection Pane Align Group Rotate

A1 Logging Started: 4/25/14 2:38:38 PM

A	B	C	D	E	F	G	H	I	J	K	L	M	N	O	P	Q	R	S	T	U	V	W	X	Y	Z	AA	AB		
1	Logging Started: 4/25/14 2:38:38 PM																												
2																													
3	MESSAGES and FAULTS:																												
4																													
5																													
6	Operator Change																												
7																													
8	4/25/2014 14:38	4/25/14 2:38	4/25/14 2:38	4/25/14 2:38	4/25/14 2:38																								
9																													
10																													
11																													
12																													
13	Entry Log	DATE of	TIME of	Operator#	Job#	Job Name	Stroke#	Part#	Batch#	Batch Size	Batch	Running	Down	Down	Stroke#	Part#	Batch#	Running	Down	Down	Tonn Low	Tonn Low	Tonn Low	Tonn Low	Tonn High	Tonn High	Tonn High	Tonn High	
14	Reason	Entry	Entry	this->new	this->new	this->new	Total	Total	Total	Current	How far	Total	FAULT Tot	IDLE Total	by this Op	by this Op	by this Op	by this Op	by this Op	FAULT by this Op	IDLE by this Op	LR	RR	LF	RF	LR	RR	LF	RF
15																													
16	Initial Log	4/25/2014	2:38:40 PM	0	2	----	90	0	0	0	0	0:00:49	0:00:00	0:00:00	0	0	0	0:00:00	0:00:00	0:00:00	0	0	0	0	0	0	0	0	
17	Unlock some Fields	4/25/2014	2:38:47 PM	0	2	----	90	0	0	0	0	0:00:49	0:00:00	0:00:06	0	0	0	0:00:00	0:00:00	0:00:06	0	0	0	0	0	0	0	0	
18	Op# Change	4/25/2014	2:38:50 PM	0 -> 10	2	----	90	0	0	0	0	0:00:49	0:00:00	0:00:09	0	0	0	0:00:00	0:00:00	0:00:03	0	0	0	0	0	0	0	0	
19	Job# Change Req	4/25/2014	2:38:54 PM	10	2	----	90	0	0	0	0	0:00:49	0:00:00	0:00:12	0	0	0	0:00:00	0:00:00	0:00:03	0	0	0	0	0	0	0	0	
20	New Job#	4/25/2014	2:38:58 PM	10	2 -> 1	----	90	3	0	0	0	0:00:49	0:00:00	0:00:16	0	0	0	0:00:00	0:00:00	0:00:04	0	0	0	0	0	0	0	0	
21																													
22																													
23																													
24																													
25	Current	4/25/2014	2:39:02 PM	10	1	----	90	3	0	0	0	0:00:49	0:00:00	0:00:20	0	0	0	0:00:00	0:00:00	0:00:04	0	0	0	0	0	0	0	0	
26																													
27																													
28																													
29																													
30																													
31																													
32																													
33																													
34																													
35																													
36																													
37																													
38																													
39																													
40																													
41																													
42																													
43																													
44																													
45																													

pcs_192.168.0.132_230_4-25-14_2

Ready

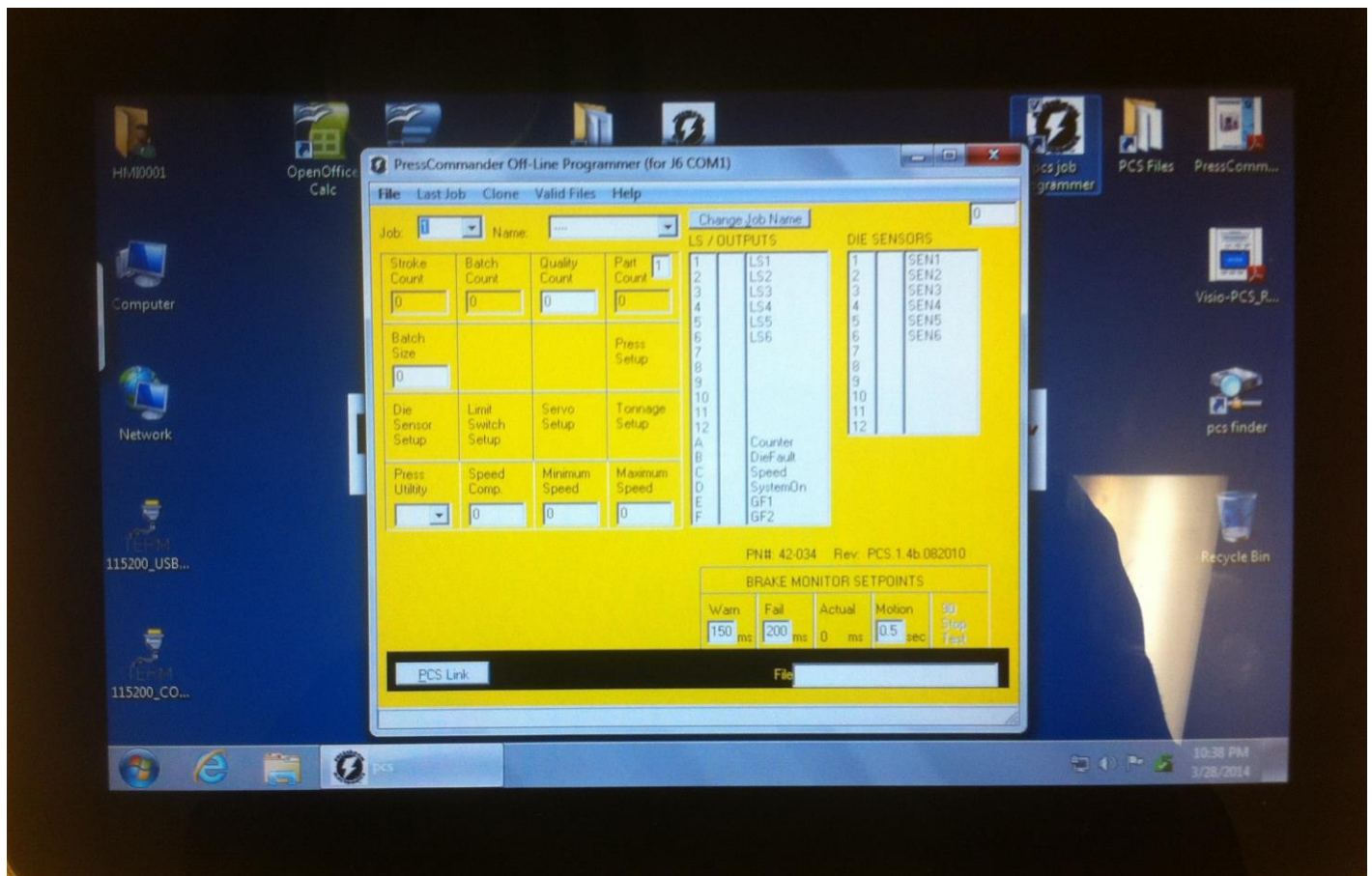
87%

Pressroom Electronics, Inc.

Presscommander Ethernet/WI-FI Remote operator station and Down-Time Monitor

The Presscommander OFFLINE Job(s) Programmer connects to the Presscommander via either USB or Serial COM port.
Go into the PCS FILES folder for documentation

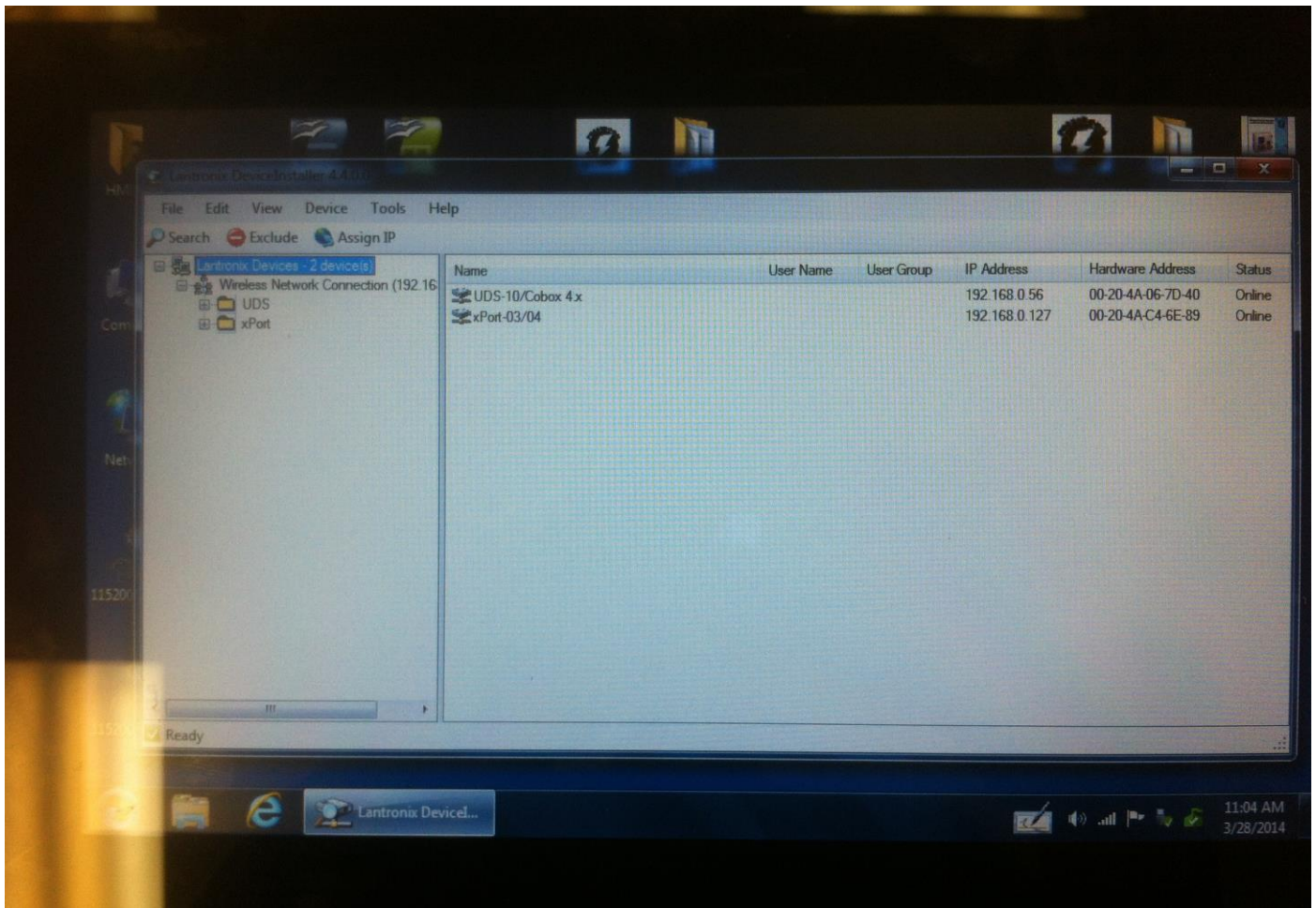
This Job Programmer allows for backup storage of the Jobs that are contained in the Presscommander (PCS) DISPLAY UNIT.



Pressroom Electronics, Inc.
Presscommander Ethernet/WI-FI Remote operator station and Down-Time Monitor

The Presscommander (PCS) finder searches your network to find the Internet address (IP) of all your Presscommanders that are connected to the same network.

It is possible to SET an IP address permanently if you don't have a DHCP server on the network

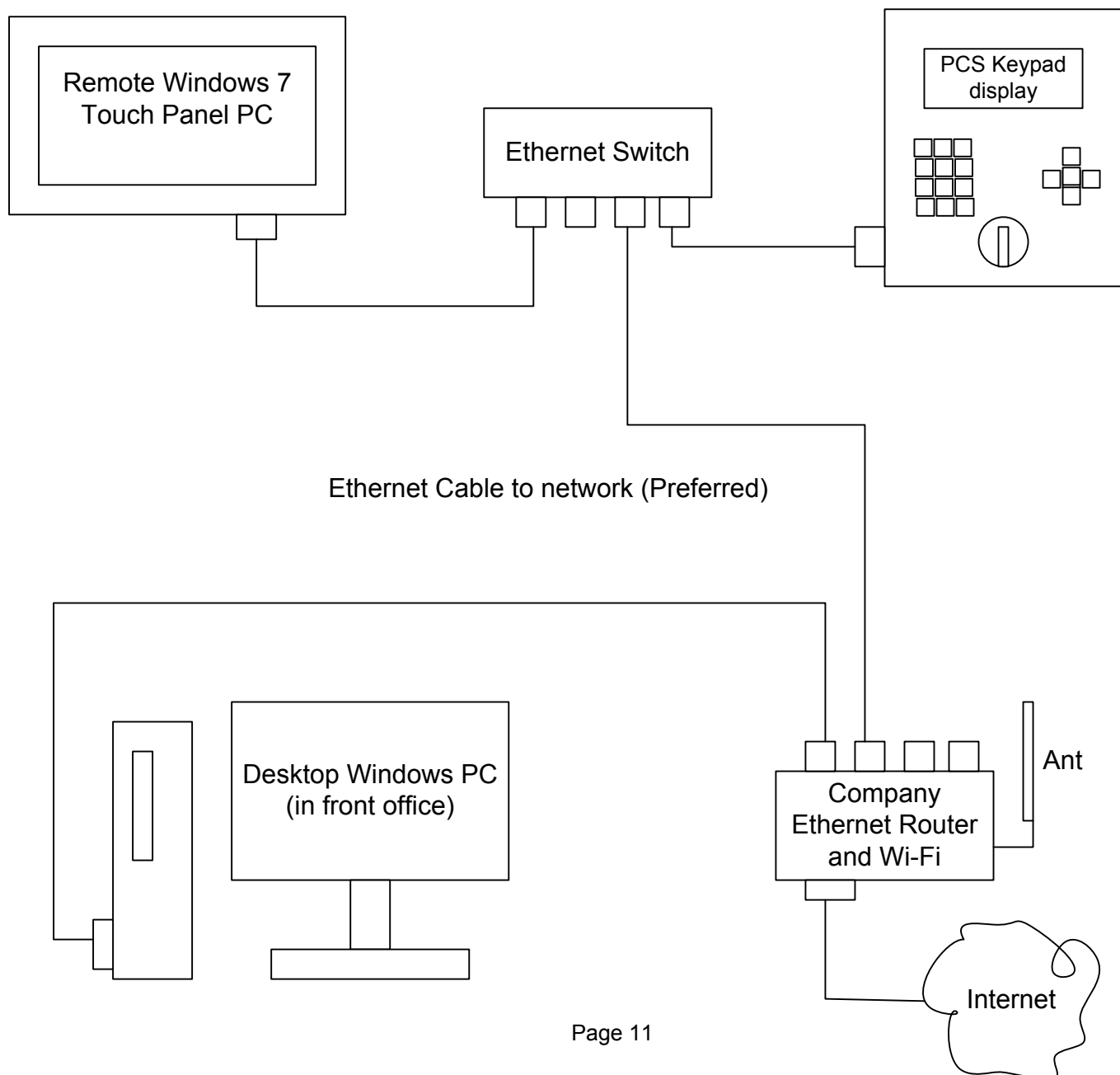


Pressroom Electronics, Inc.
Presscommander Ethernet/Wi-Fi Remote operator station and Down-Time Monitor

Please note that some knowledge of Ethernet and Router configuration is required.

There are many possible configurations of the Presscommander with the Remote Touch Panel PC Display.

Below is the **preferred configuration**: Hard wired Ethernet cable between all devices with inexpensive Ethernet Switches and routers. Access to the PCS can be obtained from the Touch Panel, Office PC, and over the Internet

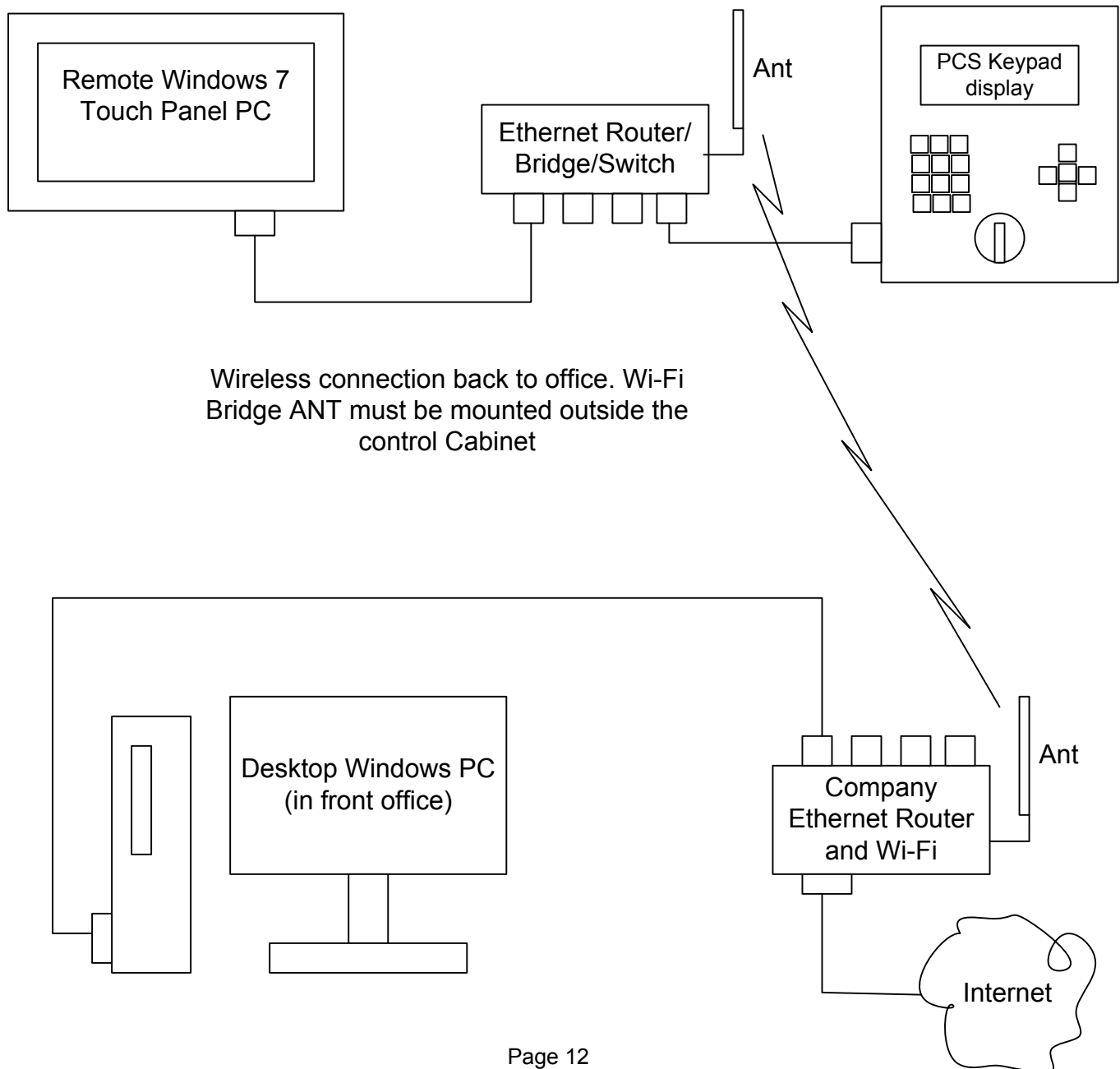


Pressroom Electronics, Inc.
Presscommander Ethernet/WI-FI Remote operator station and Down-Time Monitor

Please note that some knowledge of Ethernet and Router configuration is required.

There are many possible configurations of the Presscommander with the Remote Touch Panel PC Display.

Below is much less preferred configuration: Hard wired Ethernet cable between the Touch PC and PCS, but Wi-Fi back to the front office. Wi-Fi performance and connection issues.

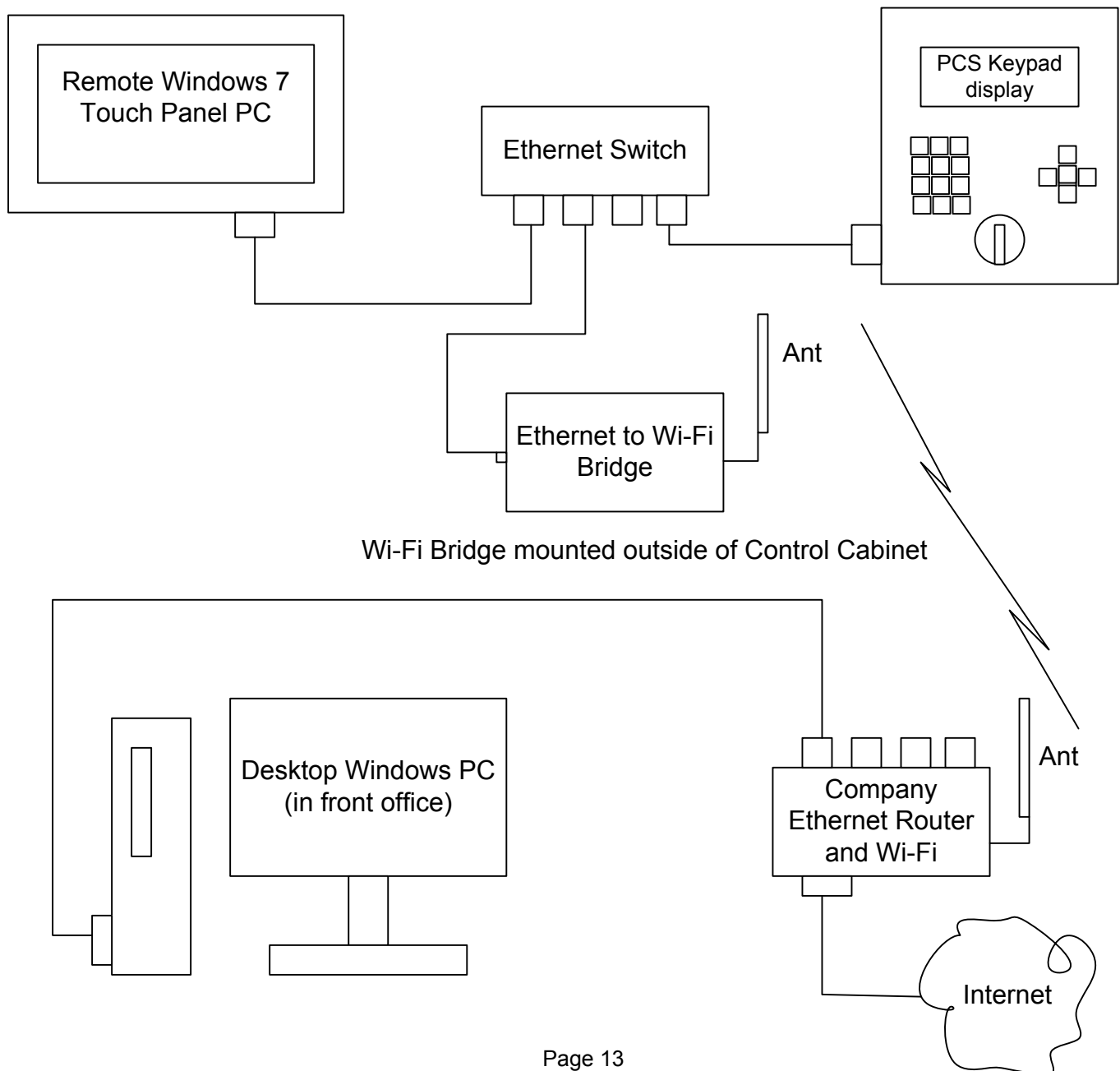


Pressroom Electronics, Inc.
Presscommander Ethernet/WI-FI Remote operator station and Down-Time Monitor

Please note that some knowledge of Ethernet and Router configuration is required.

There are many possible configurations of the Presscommander with the Remote Touch Panel PC Display.

Below is much less preferred configuration: Hard wired Ethernet cable between the Touch PC and PCS, but Wi-Fi back to the front office. Wi-Fi performance and connection issues.



Pressroom Electronics, Inc.

Presscommander Ethernet/Wi-Fi Remote operator station and Down-Time Monitor

Connecting the Presscommander to your Network

- A) Touch Panel PC Remote Display and Ethernet Enabled Presscommander**
- B) Ethernet Enabled Presscommander ONLY**

Wired Setup (standard hardware):

Simply connect your networks CAT 5e Ethernet Cable to: an open port on the Ethernet Switch provided with option A) or the Ethernet Jack on the side of the Presscommander Display Unit with option B)

Wi-Fi Bridge Setup (this is OPTIONAL hardware):

Follow the instructions that come with the Bridge before plugging it into anything.

You will need to plug the Bridge into your laptop to set it up to automatically connect to your networks Wi-Fi. This requires you to know the SSID of the Wi-Fi network and its password.

You will then need to pick a location to install the Bridge device. Avoid high power or high voltage devices (i.e. motors, starters, drives, high voltage lines).

Connect the Wi-Fi Bridge Ethernet jack to any open port on the Ethernet Switch with option A) with Cat5e cable, or the Ethernet Jack on the side of the Presscommander Display Unit with option B)

Presscommander Ethernet IP Address:

NO NETWORK: If you have option A) Touch Panel PC with the Presscommander, but do not connect it to your network, your Presscommander will be assigned an IP automatically (i.e. 169.xxx.xxx.xxx). You will not be able to connect to the Internet itself, but the Touch Panel PC will be able to Remote Display the Presscommander.

NETWORK: Whether you have Option A) or B), once connected to your Network, your Networks Router will supply an Internet IP address to your Presscommander.

Finding the Presscommander Ethernet IP Address:

On the Touch Panel PC Click to Run “tcp ip finder” app from the Desktop

On a laptop PC you must download and install DeviceInstaller.exe from Lantronix

Either program will allow you to find the IP address of the Presscommander based on the MAC ID. The MAC ID is written on a label on the backside of the Presscommander Display unit and on the Ethernet Jack of the Presscommander itself (with aluminum cover removed).

You can keep the IP address from changing by going to your network router and assigning the IP address as STATIC

Total Safety Solutions



Control Reliable Machine Guarding Safety Devices and Controls for Industry

- Safety Light Curtains (all types and styles)
- Safety Mat Systems (all types and styles)
- Universal Safety Controller HUB / Safety PLC
- Ergonomic Palm Buttons *UltraTouch*
- Safety Interlock Switches (including explosion proof)
- Fencing with Interlocks
- Stack Lights and E-Stops
- OSHA and ANSI Compliant Controls
- Customized "control reliable" controls for dual solenoid activated pneumatic & hydraulic applications
- Energy Isolation and Single Point Lockout Systems
- Plant Surveys and Risk Assessment
- Stainless Steel Enclosures Available
- Customized Control Panels

(800) 569-7697

sales@pinnaclesystems.com
www.pinnaclesystems.com



OSHA/ANSI Compliant Clutch/Brake Punch Press Control Systems for the Metal Stamping/Forming Industries

- Punch Press Clutch / Brake Controls
- Resolver Based Clutch / Brake Controls
- Rotary Cam Based Clutch / Brake Controls
- Punch Press Automation Controls
- Time Based Brake Monitor
- Stopping Performance Monitor
- Die Protection Systems
- OSHA and ANSI Compliant Controls
- Programmable Limit Switches
- Tonnage Monitoring
- Servo Feed Interface
- Customized Punch Press Controls
- Press Brake Guarding for Mechanical, Air Clutch and Hydraulic Press Brakes
- Optional 10.1" Touchscreen Available
- Stainless Steel Enclosures Available

(800) 937-4334

sales@pressroomelectronics.com
www.pressroomelectronics.com

The Ultimate in Safety - Quality - Value

Pressroom *Electronics*™

WARRANTY

Manufacturer warrants that this product will be free from defects in material and workmanship for a period of one year from the date of shipment thereof. Within the warranty period, manufacturer will repair or replace such products which are returned to it with shipping charges prepaid and which will be disclosed as defective upon examination by the manufacturer. This warranty will not apply to any product which will have been subject to misuse, negligence, accident, restriction, and use not in accordance with manufacturer's instructions or which will have been altered or repaired by persons other than the authorized agent or employees of the manufacturer.

DISCLAIMER

The provisions of the paragraph "Warranty" are the sole obligations of the manufacturer and exclude all other warranties of merchantability, expressed or implied. Further, there are no warranties which extend beyond the above warranty.

DISCLAIMER

Pressroom Electronics does not assume liability for the contents of this publication or the use of any products described. Pressroom Electronics reserves the right to make changes to the products or any catalogs without further notice.

ERRORS AND OMISSIONS

Information presented by Pressroom Electronics has been checked and is believed to be accurate; however, no responsibility is assumed for clerical, typographical or proofreading errors or omissions.

LIMITATION OF LIABILITY

In the event of any claim or breach of any obligations of manufacturer under any order, whether expressed or implied, and particularly in the event of any claim or a breach of the warranty or warranties contained in the paragraph "Warranty" or of any other warranties, expressed or implied which might, despite the paragraph entitled "Disclaimer," be determined to be incorporated in any order, the company shall under no circumstances be liable for any consequential or special damages, either in law or in equity, or for losses or expenses or claims for the same arising from the use of, or inability to use, the products of the manufacturer for any purpose whatsoever.

WARNING

The entire machine safety system must be tested at the start of every shift. Machine testing should include: (1) proper machine operation and stopping capability; and (2) verification of proper installation and settings of all point of operation guards and devices before the operation is released for production.

CHANGE IN SPECIFICATIONS

Product specifications and accessories may be changed at any time based on improvements and other reasons. It is our practice to change part numbers when published ratings or features are changed, or when significant construction changes are made. However, some specifications of the Product may be changed without any notice. When in doubt, special part numbers may be reassigned to fix or establish key specifications for your application. Please consult the factory.

Additional products to achieve your **Total Safety Solution!!!**

- Safety Light Curtains (All Types and Styles)
- Universal Safety Controller HUB / Safety PLC
- Safety Mat Systems and Controls
 - Area Guarding Systems
 - NSD Safety Mat Systems
 - STTS Safety Mat Systems
 - Direction of Travel Mats
 - High-Temp Welding Mats
- Ergonomic Palm Buttons
 - UltraTouch Palm Buttons
- Safety Interlock Switches (including explosion proof)
- Customized "control reliable" controls for dual solenoid activated pneumatic and hydraulic valve applications
- Fencing with Interlocks
- E-Stop Buttons
- Stack Lights

- Energy Isolation and Single Point Lockout Systems
- Plant Surveys, Risk Assessment & Installation Services
- Customized Control Panels; Stainless Steel enclosures available for all products

Punch Press / Metal Stamping Industry

- Resolver or Rotary Cam Based Clutch / Brake Controls - OSHA/ANSI Compliant
- Punch Press Automation Controllers
- Time-Based Brake Monitors
- Programmable Limit Switches
- Die Protection & Tonnage Monitoring Systems
- Servo Feed Interfaces

Press Brake Guarding and Controls

- Press Brake Guarding for Mechanical, Air Clutch and Hydraulic Press Brakes
- Press Brake Control Systems



Pressroom 
Electronics TM

www.pressroomelectronics.com

Sales and Marketing Office

P.O. Box 99875
Pittsburgh, PA 15233

Phone: (412) 262-1115

Fax: (412) 262-1197

sales@pressroomelectronics.com

orderentry@pressroomelectronics.com

Manufacturing and Service Center

3715 Swenson Avenue
Saint Charles, IL 60174

Phone: (630) 443-9320

Fax: (630) 443-9346

service@pressroomelectronics.com

We have designed our equipment to the very highest performance and safety standards known to the current technological state of the art, as evidenced by our U.S.A. and foreign patents issued and pending. However, the installation, usage, and suitability, and fitness of our equipment for any purpose, known or unknown, is interdependent upon the performance of other equipment not manufactured, installed, secured or maintained by Pressroom Electronics.

We cannot and do not accept responsibility for any overall system performance when factors such as these, are beyond our control.